

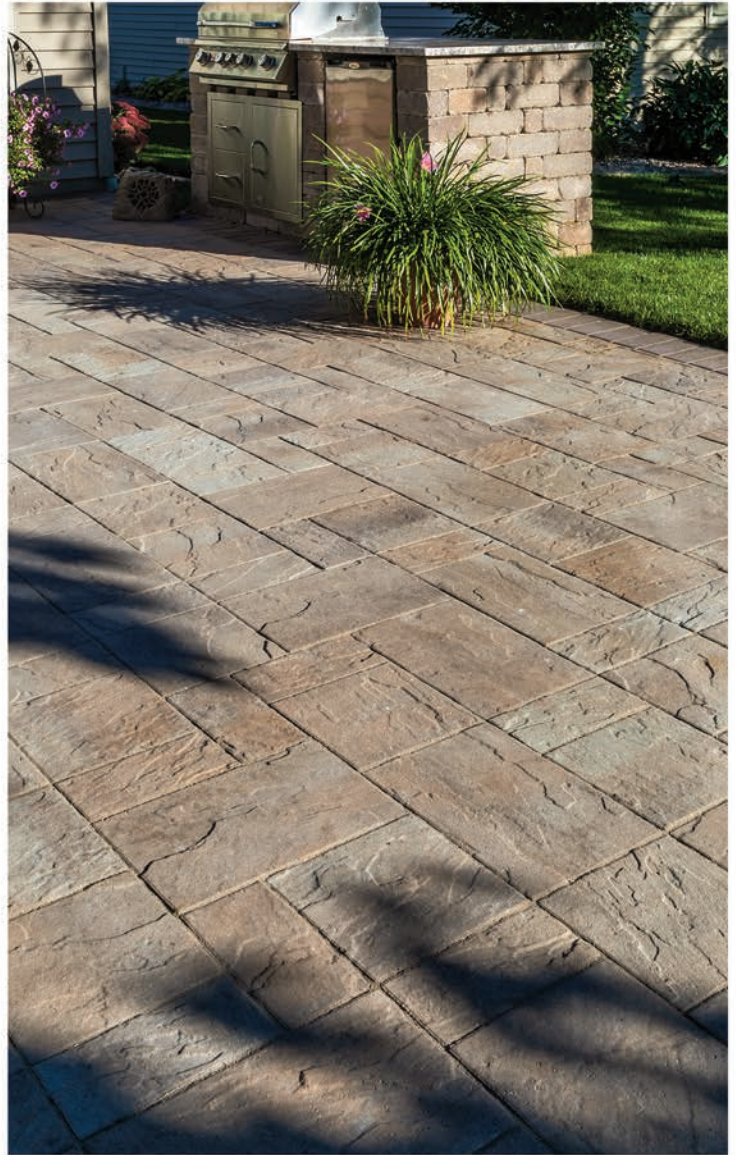
TAHOE PAVER

THE NEW STANDARD



- Suitable for patios, pathways, pool decks and vehicular
- Three-piece paver system made in Chroma Color (facemix) with Chroma Shield protected surface
- Embossed surface, chamfered/irregular edge w/small auto spacer
- Combine/accent with American Brick, 6 x 12 Accent, Cobble Stone or Colonial pavers

Colors on back.



Size/Name	Dimensions	Face Area	Units/Layer	Layers	Units/Pallet	Pallet Weight	
Small	5 x 10 x 2-3/8" H	0.33 sq. ft.	8				
Medium	10 x 10 x 2-3/8" H	0.67 sq. ft.	6	8 (11.75 sq. ft)	152 (94 sq. ft.)	2,525 lbs.	
Large	15 x 10 x 2-3/8" H	1.01 sq. ft.	5				
9 x 12 Accent (smooth)	6 x 12 x 2-3/8" H	0.46 sq. ft.	13 lbs.	21	10 (9.7 sq. ft.)	210 (97 sq. ft.)	2,780 lbs.
9 x 12 Accent (embossed)	6 x 12 x 2-3/8" H	0.46 sq. ft.	13 lbs.	21	10 (9.7 sq. ft)	210 (97 sq. ft.)	2,780 lbs.

Use roller compactor or buffer pad when compacting. Refer to actual product samples when making color selection. Product dimensions given are nominal in inches, weights in pounds.

2460 Armstrong Dr., Winston-Salem, NC 27103
 Phone: 336-774-6544 • Fax: 336-774-9060
midatlanticcp.com



Manufactured by:



©Copyright 2024. All Rights Reserved. This information has been prepared for the benefit of customers interested in Mid-Atlantic Concrete Products. It was reviewed carefully prior to publication. Rochester Concrete Products assumes no liability for its accuracy or completeness. Final determination of the suitability of any information or material for the use contemplated, or for its manner of use, is the sole responsibility of the user. 424



TAHOE PAVER COLORS



Chroma Color Protected

